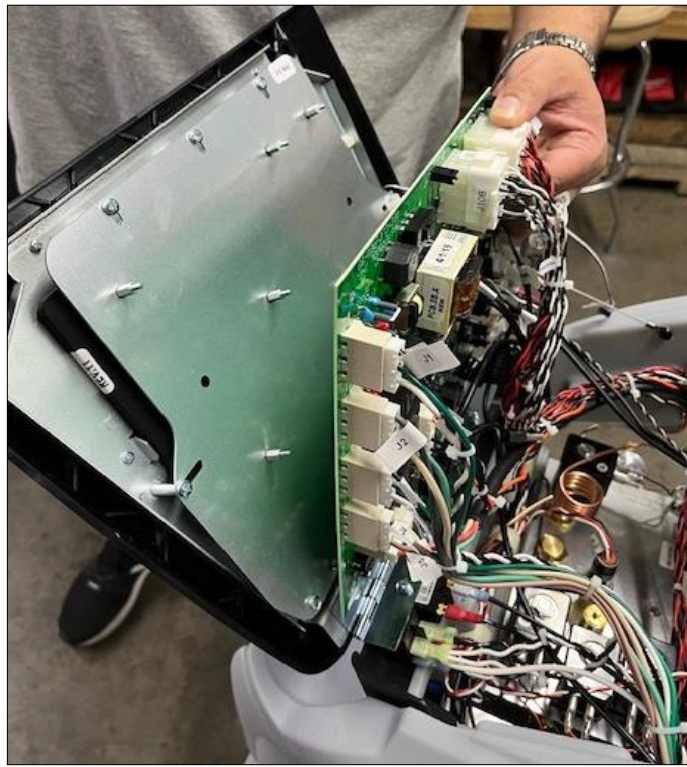


PICTURE 1 – CONNECTION LOCATIONS

CAUTION – UNPLUG THE POWER CORD BEFORE REMOVING PC BOARD.

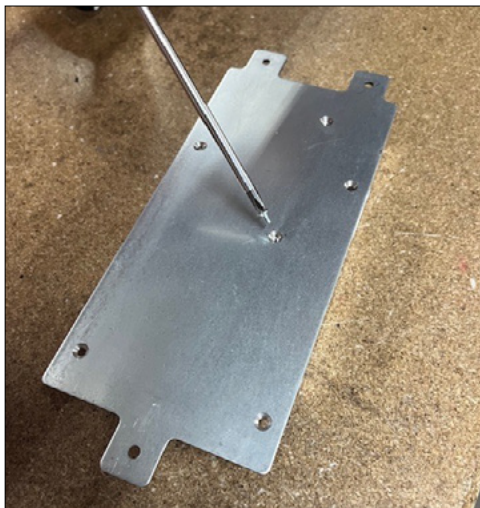
See picture 1 for locations of nuts, wire locations and hinge screw locations.

1. Disconnect wire to tablet plugged into socket J6.
2. Disconnect USB cable to the tablet. Note the location of the USB socket.
Note: The USB cable for the 8" tablet will not work with the 10" tablet.
3. Disconnect audio connection, if used.
4. PC board mounting stud locations circled in yellow. Remove nuts (5.5 mm) from screws.
5. Note that some of the studs are circled in red. Those studs have insulation washers under the nuts. Remove the nuts and be sure and save the washers.
6. Gently pull PC board and wires away from screws and lay it back on the machine. See picture 2.

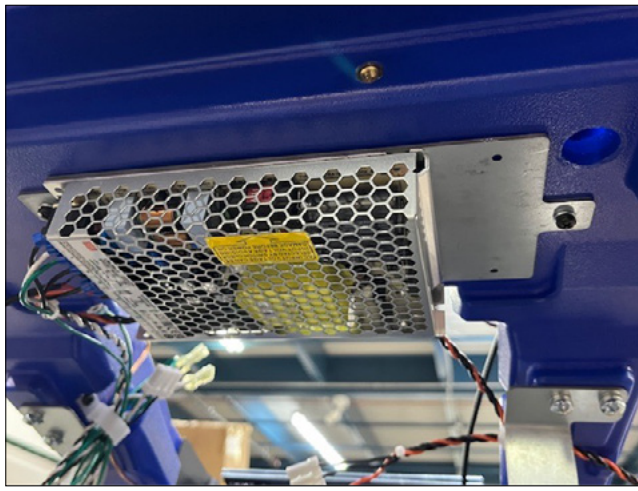


PICTURE 2 - STEPS 6 AND 10

7. Remove screws from hinge.
8. Remove front face with mounted tablet.
9. Install new front panel with tablet. Check alignment of face with machine before tightening screws.
10. Install PC board back on studs and put nuts back on. Remember to put the insulating washers under the nuts with the red circles.
11. Remove the back cover of the machine. Remove the three screws on the sides of the back cover and the two screws under the handle. Lift the panel while tilting it back. Leave the power wire connected to the back cover and rotate the cover out of the way.
12. Replace power supply for the one provided in the kit: Remove the power supply from chassis. Remove the back plate of the old power supply and mount it on the new power supply (Pic 3). Re-install the new power supply back in the chassis, always using the same hardware (Pic 4).

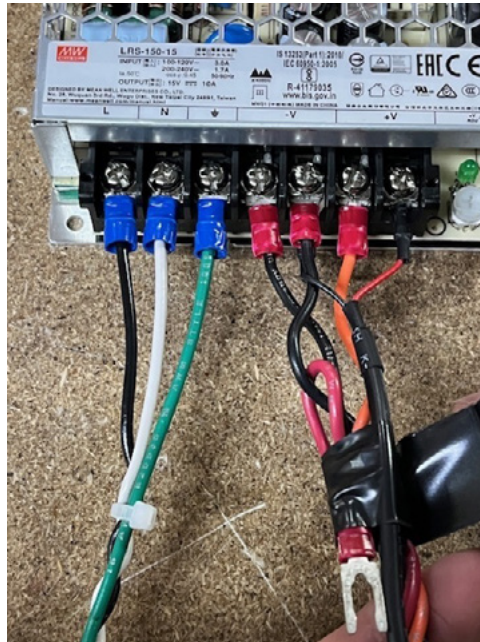


PICTURE 3



PICTURE 4

13. Install the wires onto the power supply following picture 5. If harness J24 includes a red wire, fold it back and wrap it with electrical tape (it is no longer used). Make sure to route and connect the tablet's power cable properly into the power supply. Install the red wire in one of the V+ terminals and the black wire in one of the V- terminals.



PICTURE 5

14. Unplug low voltage connector J24, from the PC board.
15. USING EXTREME CAUTION TO AVOID TOUCHING ANY WIRE CONNECTIONS, PLUG THE MACHINE IN AND TURN IT ON.
16. Put the leads of a voltmeter set on DC into the J24 connector as shown in picture 6. The voltage should read around 14.5v.



PICTURE 6

17. Turn the machine off and unplug it.
18. Plug the low-voltage connector back into socket J24 the PC board.
19. Replace the back panel.
20. Plug the USB cord from the tablet into the same position on the PC board as the old one.
21. If there is a wire connected to the tablet with a connector on it (future models may not require this wire), plug it into the PC board in the same J6 location as the old tablet.
22. There is not an audio connection on the new tablet.
23. Make sure all the wires are secure and close the top panel.
24. Replace the screws on the top panel and the machine is ready to use.